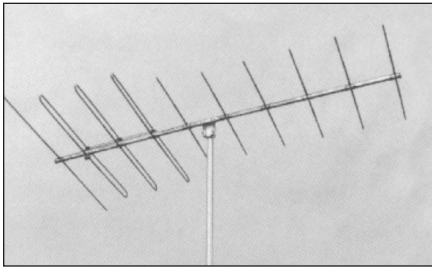


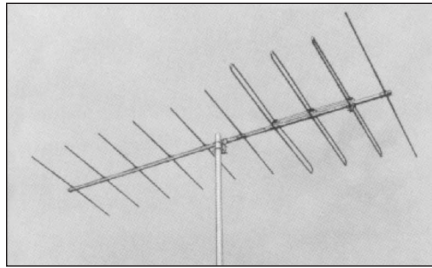
TACO

Ten Element Rugged Yagi Antennas



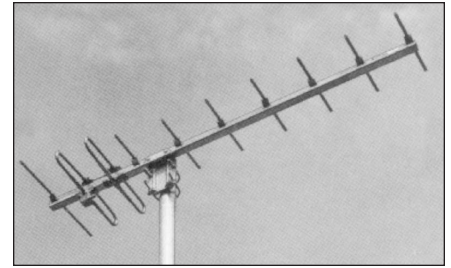
Y 101 SERIES

Triple-driven narrow bandwidth models covering 60 to 108 MHz including TV channels 4, 5 and 6.



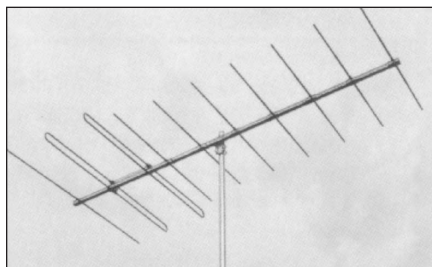
Y 102 SERIES

Twin and triple-driven moderate bandwidth models covering 108 to 163 MHz.



Y 103 SERIES

Twin-driven broad bandwidth models covering 152 to 440 MHz including individual and combined TV channels 7 through 13.



Y 104 SERIES

Extra-rugged, twin-driven narrow bandwidth models covering 43 to 88 MHz including TV channels 2 through 6.

SPECIFICATION ("Y" Series Antennas Can Be Supplied With Higher Power Ratings On Special Request)

MODEL	FREQ. (MHz)	GAIN** (Nom. dBi)	VSWR (Max)	HPBW (Nom deg.)		PWR. IN (Max W.)	NO. DRIV ELEMENTS	LENGTH (Max in.)	WIDTH (Max in.)	NET WT. No ice lbs.	NET WT. 1/2" ice lbs.	WINDLOADING		SHIPPING INFORMATION						
				E-plane	H-plane							THRUST No ice lbs.	THRUST 1/2" ice lbs.	Cubage	Carton Size in. (*)					
Y101 - 65	60-70	10.5	2.0:1	54.0	70.0	180	3	199.25	100.0	30.0	150	159	300	3.5	110 1/2 x 6 3/4 x 8					
Y101 - 4*	66-72					360		163.75	95.0	27.5	128	105	240							
Y101 - B	72-76	11.2	1.4:1	48.6	64.0	250	3	157.12	82.0	25.0	111	112	210	3.0	84 x 6 3/4 x 9					
Y101 - 5*	76-82					240		152.25	77.5	24.0	105	100	200							
Y101 - 6*	82-88					230		138.75	74.0	22.0	98	95	180							
Y101 - C	88-96					220		132.25	67.0	21.0	91	91	170							
Y101 - FM	88-108					160		123.12	75.0	22.0	97	85	180							
Y101 - D	96-104					200		122.75	61.75	20.0	86	85	160							
Y101 - E	104-112					200		120.0	57.0	19.0	79	80	150							
Y102B - 120	108-133					11.2		1.6:1	50.0	65.0	150	3	101.3			61.0	17.5	79	80	150
Y102B - F	112-122	3	113.5	54.0	17.0		79				77		145	4.4	8 1/2 x 7 1/2 x 118					
Y102B - 130	120-140	3	105.0	55.0	17.0		99				80		150	1.3	5 1/4 x 3 3/4 x 112					
Y102B - G	122-132	3	104.5	48.0	16.5		68				69		130	2.2	6 x 6 x 106					
Y102B - H	132-142	2	99.0	43.0	16.0		60				59		110							
Y102B - 150	133-163	3	86.8	49.5	16.0		67				64		120			1.3	5 1/4 x 3 3/4 x 112			
Y102B - J	142-152	2	93.0	40.0	15.5		56				59		110			2.2	6 x 6 x 106			
Y103B - KB	149-161	12.0	1.5:1	45.0	58.0		140				2		85.88	41.5	12.5	48	53	100	1.2	5 3/4 x 3 3/4 x 95
Y103B - K	152-163					3	85.88	41.5	12.5	48		53	100	1.2	5 3/4 x 3 3/4 x 88					
Y103B - KA	154-165					3	85.8	41.5	12.5	48		53	100	1.2	5 3/4 x 3 3/4 x 95					
Y103B - L	163-174					3	80.38	38.0	12.0	45		48	90	1.1	5 1/4 x 3 3/4 x 49					
Y103B - 7*	174-180					3	86.88	34.5	14.0	45		45	80	1.2	5 3/4 x 3 3/4 x 88					
Y103B - (7-13)*	174-216					3	43.12	34.0	8.5	40		35	70	0.6	5 1/4 x 3 3/4 x 49					
Y103B - 8*	180-186					3	82.5	33.5	12.0	43		45	80	1.1	5 3/4 x 3 3/4 x 88					
Y103B - 9*	186-192					3	79.5	32.5	11.5	41		40	80	1.1	5 3/4 x 3 3/4 x 88					
Y103B - 10*	192-198					3	75.75	31.25	11.5	39		40	70	1.1	5 3/4 x 3 3/4 x 88					
Y103B - 11*	198-204					3	73.5	30.5	11.5	38		40	70	1.1	5 3/4 x 3 3/4 x 88					
Y103B - 12*	204-210	12.0	1.5:1	45.0	58.0	110	2	70.75	28.25	11.0	38	35	70	1.1	5 3/4 x 4 1/4 x 74					
Y103B - 13*	210-216					3		66.75	28.25	11.0	35	35	60	1.1	5 3/4 x 4 1/4 x 74					
Y103B - M	216-235					3		61.62	26.75	8.5	34	37	70	1.1	5 3/4 x 4 1/4 x 74					
Y103B - N	235-250					3		59.38	24.88	8.0	33	37	70	0.8	5 3/4 x 3 3/4 x 64					
Y103B - 245	240-251					3		59.38	24.88	8.0	33	37	70							
Y103B - 250	244-265					3		58.38	24.12	8.0	32	37	70							
Y103B - P	250-268					3		55.5	23.25	8.0	30	32	60							
Y103B - 270	259-277					3		50.75	22.25	7.5	29	32	60							
Y103B - Q	268-285					3		49.38	21.5	7.5	27	32	60							
Y103B - R	285-305					3		48.25	20.5	7.5	27	30	55							
Y103B - 400	360-440	3	55.22	17.25	7.5	26														
Y104 - 44	43-46	11.2	1.4:1	48.0	64.0	64.0	2	241.0	146.0	49.0	195	186	350			4.8	147 x 6 3/4 x 8			
Y104 - 48	46-50							221.0	134.0		187	181	340			4.3	137 x 6 3/4 x 9			
Y104 - A	50-54							186.0	126.0		177	170	320	4.5	129 x 6 3/4 x 9					
Y104 - 2*	54-60							1.5:1	48.0	64.0	64.0	2	177.0	119.0	48.0	165	160	300	4.3	122 x 6 3/4 x 9
Y104 - 3*	60-66															165.0	108.0	157	150	280
Y104 - 4*	66-72							1.4:1	48.0	64.0	64.0	2	155.0	91.0	47.0	144	140	260	3.6	114 1/4 x 6 3/4 x 8
Y104 - B	72-76															147.0	92.0	142	135	250
Y104 - 5*	76-82							1.4:1	48.0	64.0	64.0	2	134.0	86.0	47.0	131	125	240	3.6	84 x 6 3/4 x 9
Y104 - 6*	82-88															127.0	80.0	127	115	225

* Suffix indicates TV channel ** dB referenced to an isotropic source.

All models equipped with 50 Ohm type "N" terminal.
NOTE: Welded Construction on "B" Models available on special request.