

Civil Aviation Yagi Antenna

- Y112B-130V

This TACO Yagi Antenna is specifically designed for Air Traffic Over Flight Control. The radiation pattern has been altered to improve antenna performance in multiple directions. Additional gain has been provided at 90, 180 and 270 degrees while maintaining forward gain of over 10 dBi.

SPECIFICATIONS:

ELECTRICAL

MODEL(S)	Y112B-130V	
Frequency Range (MHz)	120 - 140	
Gain (dBi)	10.4	
Impedance [Ohms]	50	
Polarization	Vertical	
Back to Front Ratio	10.4 dB	
VSWR:	Min	1.4
	Max	1.8
Typical	1.6	
HPBW:	Horz.	55°
	Vert.	82°
1st Sidelobe Suppression	6 dB	
Std. Connector	N	
Max. Input Power [watts]	500	
Operating Temperature	-50 °C - 100 °C	

MECHANICAL

MODEL(S)	Y112B-130V	
Number of Elem.	11	
Overall Length [in.]	108	
Antenna Weight (lb)	13	

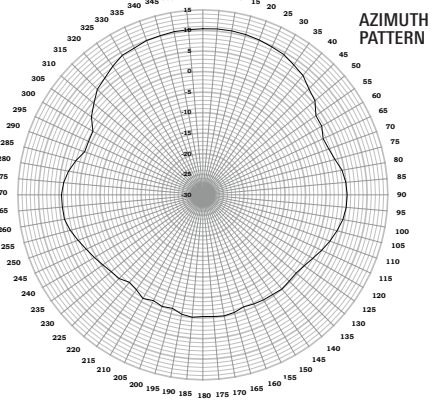
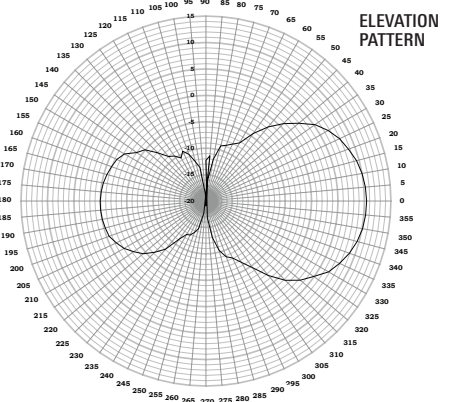
Mounting options

Type	-	
Mast size(O.D.)(in.)	3	
Az. Adjust	360°	

WIND LOADING

MODEL(S)	Y112B-130V	
Wind Area:	(No Ice)	2.92
	(1/2 Radial Ice)	5.28
Wind Load	*(No Ice)	93
	** (1/2" Radial Ice)	52.79

ANTENNA PATTERNS



* Wind Speed = 100 MPH at sea level with 100% Humidity at Seventy Degrees Fahrenheit.

** Wind Speed = 50 MPH at sea level with 100% Humidity at Zero Degrees Fahrenheit.

WADE Antenna Inc.

29 Sharp Road
 Brantford, Ontario, N3T 5L8 Canada
 Tel: 519.756.7157
 Fax: 519.756.5056

(800) 463-1607
sales@wadeantenna.com

www.wadeantenna.com