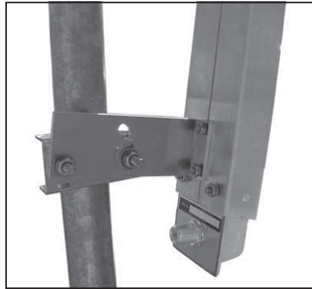




P250-5.8W



MOUNTING DETAIL

4.9 -5.8 GHZ PANEL ANTENNAS

- P250-5.8

DESCRIPTION

The new Wade Sector Panel Antenna is broadband covering the Public Safety Band (4.9 GHz) through to the Wi-Fi 5.8 GHz band. This light weight, compact Sectoral Panel has a fiberglass cover for superiority durability. The reflector wings are adjustable to provide the optimum RF pattern for each installation. The mounting bracket provides a tilting feature to focus your signal and improved performance.

APPLICATION

- Wi-Fi
- Wireless Internet cell site/ base station
- Wireless LAN
- 802.11
- WiMax
- Point-to-Multipoint wireless networks

SPECIFICATIONS

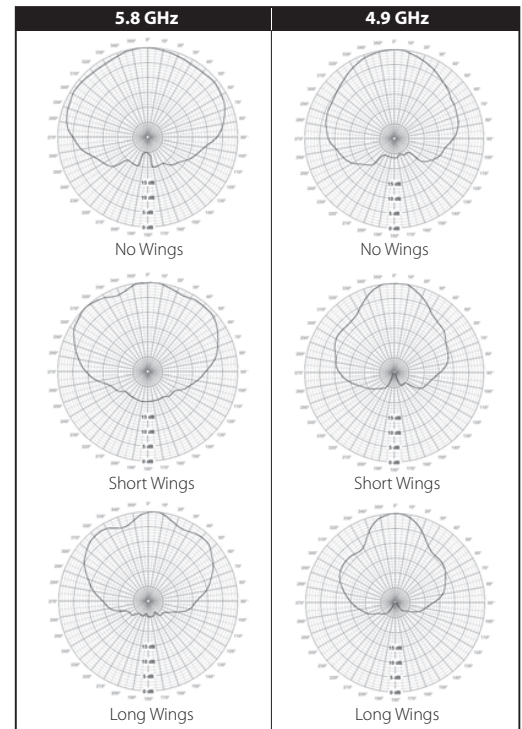
Electrical

Electrical	LONG	SHORT	NO WINGS
MODEL	P250-5.8	P250-5.8	P250-5.8
Frequency	5.8 GHz	5.8 GHz	5.8 GHz
Gain	17 dBi	15.3 dBi	14.4 dBi
Impedance	50 Ohm	50 Ohm	50 Ohm
VSWR	LESS THAN 2:1	LESS THAN 2:1	LESS THAN 2:1
F/B Ratio	30 dB	28 dB	25 dB
Polarization	VERTICAL	VERTICAL	VERTICAL
HPBW "E" plane	11 DEGREES	11 DEGREES	11 DEGREES
HPBW "H" plane	100 DEGREES	126 DEGREES	156 DEGREES
Cross Pol Rejection	> 20 dB	> 20 dB	> 20 dB
Terminal Type	N FEMALE	N FEMALE	N FEMALE
Maximum Input Power	100 WATTS	100 WATTS	100 WATTS

Mechanical

Length (in.)	13.75	13.75	13.75
Width (in.)	4.05	3.6	2.5
Depth (in.)	6.125	6.188	6.125
Mounting	WALL/TUBE/PIPE MOUNT 1 5/8" O.D. MAX	WALL/TUBE/PIPE MOUNT 1 5/8" O.D. MAX	WALL/TUBE/PIPE MOUNT 1 5/8" O.D. MAX
Housing	ALUMINUM	ALUMINUM	ALUMINUM
Radome	FIBERGLASS, WHITE, UV STABILIZED	FIBERGLASS, WHITE, UV STABILIZED	FIBERGLASS, WHITE, UV STABILIZED
Weight	1.6 LBS (0.72 KG)	1.6 LBS (0.72 KG)	1.1 LBS (0.49 KG)
Wind Area (Sq. Ft.)	0.54	0.35	0.24

ANTENNA PATTERNS



WADE Antenna's ongoing policy of continuing development may result in specification changes to its products.

WADE Antenna Inc.

29 Sharp Road
 Brantford, Ontario, N3T 5L8 Canada
 Tel: 519.756.7157
 Fax: 519.756.5056

(800) 463-1607
sales@wadeantenna.com

www.wadeantenna.com