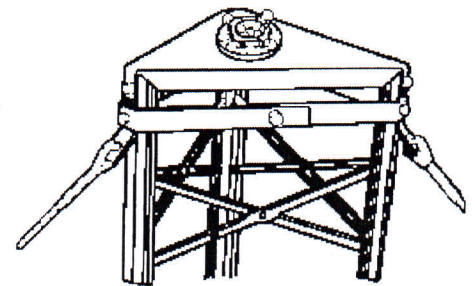
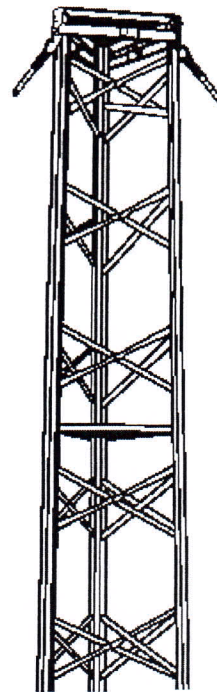
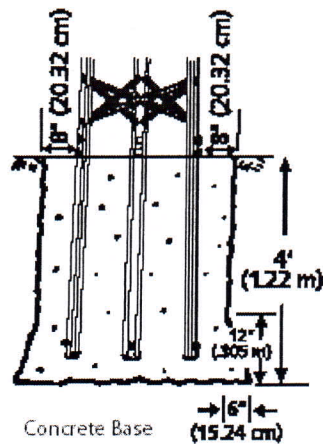
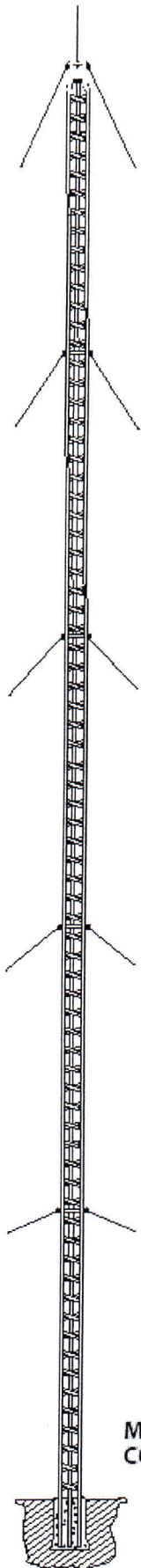


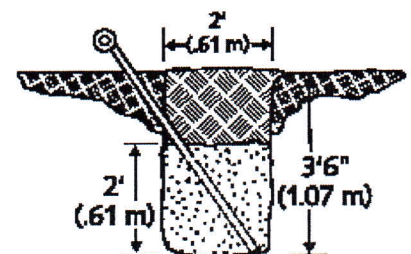
CG TOWERS

Ideal for supporting Communications, Civil and Amateur antennas

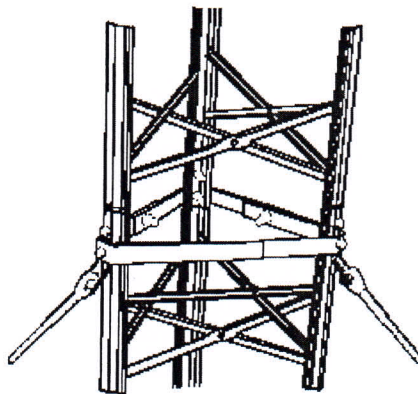
- Twelve models are available in heights from 62 ft. (8 sections) up to 147 ft. (19 sections) plus mast.
- Towers are designed to support a net antenna weight of up to 80 lbs. with a horizontal wind load of up to 300 lbs. plus rotor and 2" OD x 10 ft. mast.
- Instructions are supplied for 30 degree guying with ground anchors 120 degrees apart and about 1/2 tower height from base.
- Hard Grade 1/4" OD guy wire is recommended, however, 3/16" OD can be used.
- All tower sections are eight feet long with twists reducing beaded-channel legs riveted together with "X" braces. Legs and cross braces are galvanized steel, rivets are solid aluminum, anodized. Special nuts and bolts are 1/2" O.D. and heat treated.
- No DMX4T and DMX 4 sections are 19" wide and have 16" ga. Legs. DMX 5 and DMX5S sections are 21 1/2" wide with 14ga. Legs.
- Straight sections fit smoothly together, since all leg bottoms are accurately swaged for a perfect fit.
- The three highest towers use tapered sections at the base.
- Special three-size guy stations are strong and reliable. They are attached every three sections from the base up (except CG-19) and at the top of the tower.



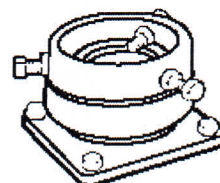
Top section with top plate, cast aluminum mast clamp and rotor plate.



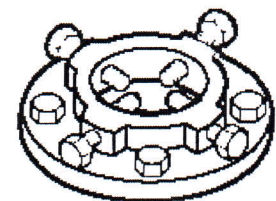
Ground Anchor



Guy Station where sections join.



BBMB
Ball Bearing
Mast bearing



244A
Cast Aluminum
Mast Clamp

