

DELHI LIGHTING & COMMERCIAL GUYED TOWER PRODUCTS

CG TOWERS

Ideal for supporting Communications, Civil and Amateur Antennas

Twelve models are available in heights from 62 ft. (8 sections) up to 147ft. (19 sections) plus mast.

Towers are designed to support a net antenna weight of up to 80 lbs. with a horizontal wind load of up to 300 lbs. plus rotor and 2" O.D. x 10 ft. mast.

Instructions are supplied for 30 degree guying with ground anchors 120 degrees apart and about 1/2 tower height from base.

Hard Grade 1/4" O.D. guy wire is recommended.

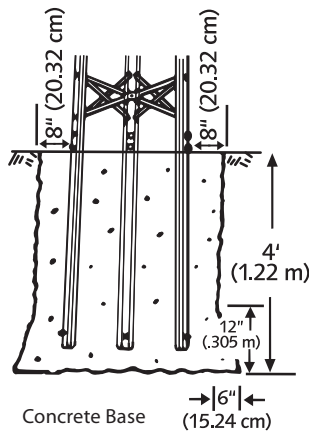
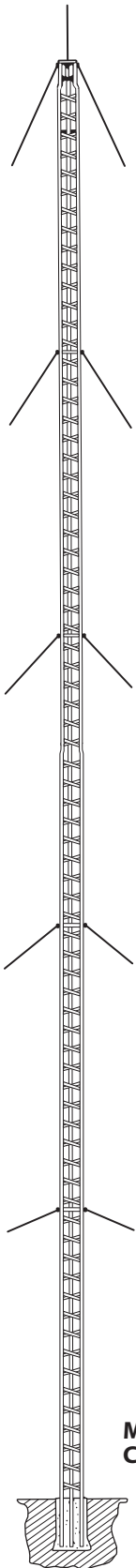
All tower sections are eight feet long with twist reducing beaded-channel legs riveted together with "X" braces. Legs and cross braces are galvanized steel, rivets are solid aluminum, anodized. Special nuts and bolts are 1/2" O.D. and heat treated.

DMX-4T and DMX-4 sections are 19" wide and have 16 ga. legs. DMX-5 and DMX-5S sections are 21 1/2" wide with 14 ga. legs.

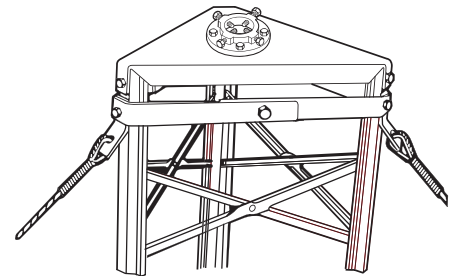
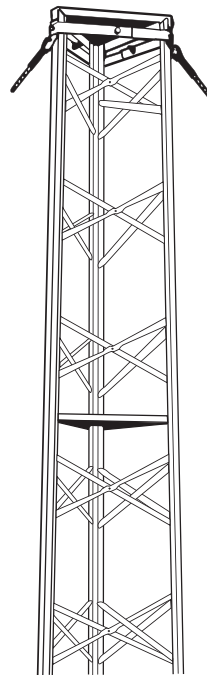
Straight sections fit smoothly together, since all leg bottoms are accurately swaged for a perfect fit.

The three highest towers use tapered sections at the base.

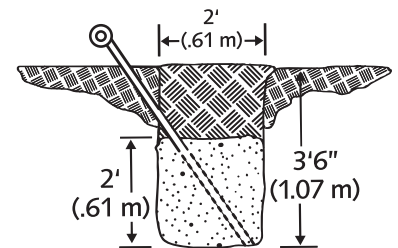
Special three-size guy stations are strong and reliable. They are attached every three sections from the base up (except CG-19) and at the top of the tower.



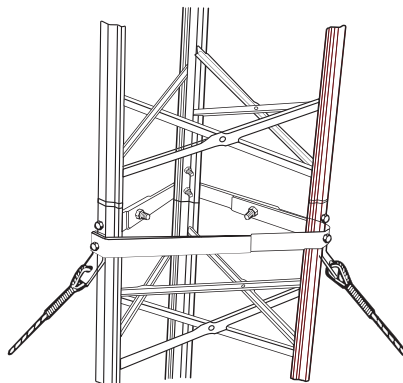
Concrete Base



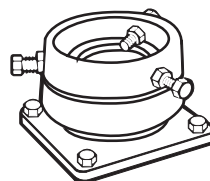
Top section with top plate, cast aluminum mast clamp and rotor plate.



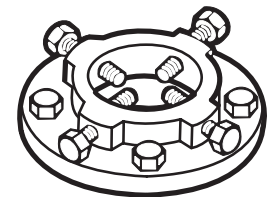
Ground Anchor



Guy Station where sections join.



BBMB
Ball Bearing
Mast bearing



244A
Cast Aluminum
Mast Clamp

CG TOWERS

All CG Commercial Guyed Towers are shipped complete with the following items:

- 8 ft. tower sections
- Top plate with a No. 244A mast clamp installed
- Rotor plate with No. 244A mast clamp installed
- Guy stations
- Concrete base stubs
- Special nuts, bolts and washers

TOWER SPECIFICATIONS

MODEL NO.	HEIGHT (FT.)	DESCRIPTION	WEIGHT (LBS)
CG-19	147	19 sections, 6 guy stations	1021
CG-18	139	18 sections, 6 guy stations	967
CG-17	131	17 sections, 6 guy stations	908
CG-16	124	16 sections, 6 guy stations	850
CG-15	117	15 sections, 5 guy stations	780
CG-14	109	14 sections, 5 guy stations	601
CG-13	101	13 sections, 5 guy stations	569
CG-12	93	12 sections, 4 guy stations	516
CG-11	85	11 sections, 4 guy stations	481
CG-10	77	10 sections, 4 guy stations	431
CG-9	70	9 sections, 3 guy stations	399
CG-8	62	8 sections, 3 guy stations	354

PARTS WHICH MAY BE ORDERED SEPARATELY

PART NO.	DESCRIPTION	WEIGHT (LBS)
DMX-4T	Top section with 16 Ga. legs	39
DMX-4S	Straight section with 14 Ga. legs	31
DMX-5	Offset section with 14 Ga. legs	42
DMX-5S	Straight section with 13 Ga. legs	43
DMX-6	Offset section with 13 Ga. legs	56
DMX-7	Offset section with 12 Ga. legs	65
DMX-8	Offset section with 12 Ga. legs	70
GS-456	Three-size guy station	8
CBS-5	Set of 3 base stubs for DMX-5	13
CBS-6	Set of 3 base stubs for DMX-6	13
CBS-7	Set of 3 base stubs for DMX-7	20
CBS-8	Set of 3 base stubs for DMX-8	21
244A	Cast Aluminum clamp for 2.5" O.D. mast	3
BBMB	Ball Bearing Mast Bearing for 2" O.D. mast	2

ASSEMBLY DIAGRAM FOR ALL CG TOWERS

