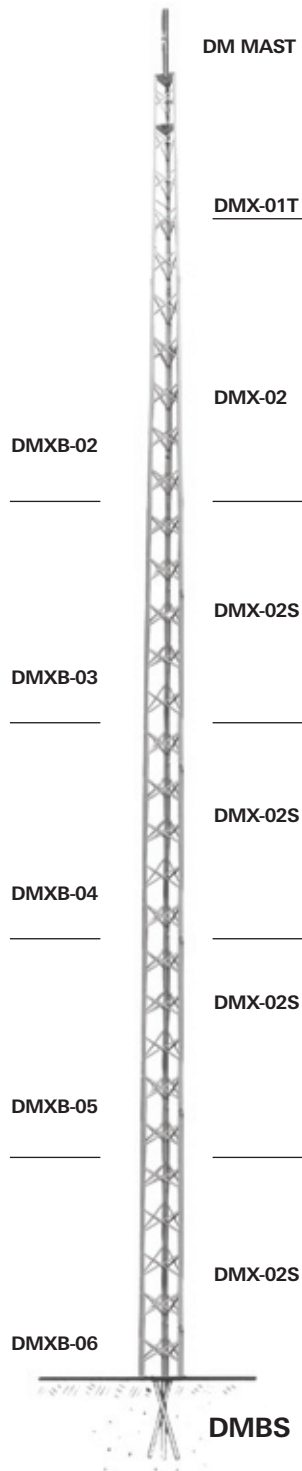


DELHI TOWERS

DMX Bracketed Towers



Features

- "X" brace with beaded channel leg design.
- Enhancements made to both leg profile and taper allow for easier installation and improved tower structure
- High strength galvanized steel construction.
- Heat treated aluminum rivets.
- Top sections tapered.
- Universal house bracket.
- No concrete required.

Load Limits

Designed to support equipment up to 3 square ft. (0.28 m²) projected wind area, mounted not more than 2.5 sections above house bracket.

Caution: Guy wires must be used for larger loads or greater heights above house bracket.

Tower Packages

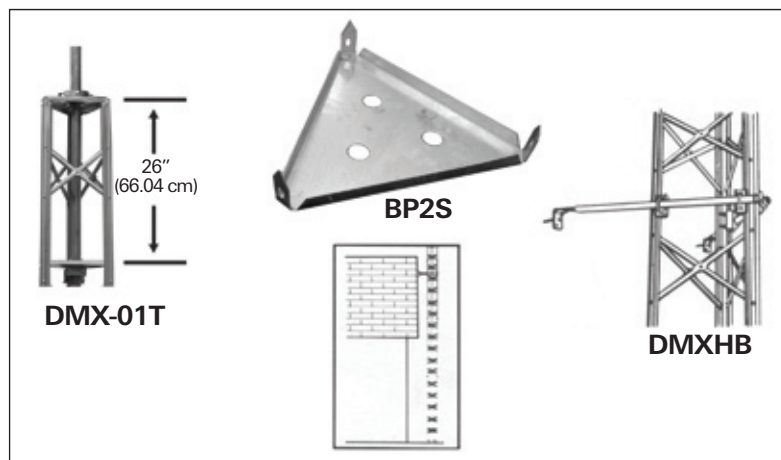
DMXB tower packages come complete with tower sections, DM mast, top plate, rotor plate, BP2S base plate, TMCA mast clamp assembly and DMXHB universal house bracket. Height includes mast.

DMXB-02	20'	(6.10 m)	DMXB-05	44'	(13.41 m)
DMXB-03	28'	(8.54 m)	DMXB-06	52'	(15.85 m)
DMXB-04	36'	(10.97 m)			

Accessories

- GS123** Guy station
DMBS Galvanized steel drive stakes. Set of three.
 1 1/4" (3.2 cm) x 3' (0.91 m). 7.3 lbs. (3.31 kg)
BP2S Base plate

Note: For tower accessories or parts that may be ordered separately, please refer to the DMS Parts and Accessories Page.



WADE ANTENNA'S ONGOING POLICY OF CONTINUING DEVELOPMENT MAY RESULT IN SPECIFICATION CHANGES TO ITS PRODUCTS

CAUTION NOTICE

Please read carefully

Our published installation guidelines are for standard towers and mounting devices as specified. These guidelines are based on assumed soil conditions (190 KPA or 4000 PSF) that may or may not exist in your area and on the assumption that no damage has occurred, or modifications are made to the tower or mounting device.

A qualified structural engineer should be consulted prior to installing any tower or supporting structure.



WARNING!

Survey your installation site **NOW** to prevent your antenna or support from coming in contact with overhead powerlines. Caution should be used when climbing towers and support structures.

FAILURE TO EXERCISE CAUTION MAY RESULT IN SERIOUS INJURY OR DEATH.