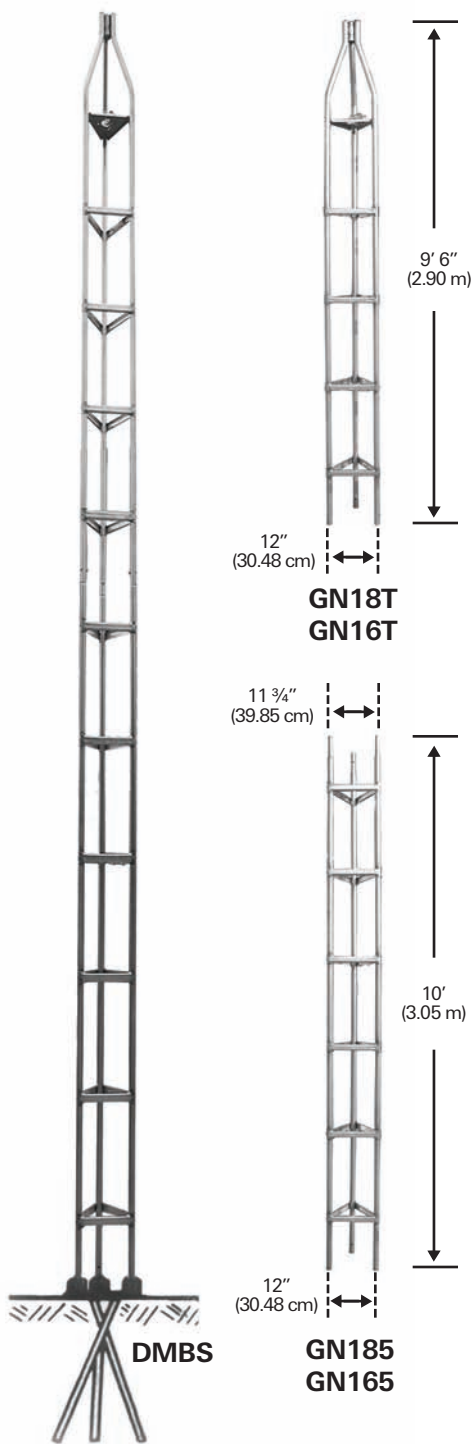


DELHI TOWERS

Golden Nugget - Tubular Towers



Features

- Precision swaged legs for perfect fit.
- "Everdur" welded for high strength.
- Sleeve bearing for masts up to 1 1/2" (3.8 cm) diameter.
- Legs and braces "Galvanized" steel.
- Rotor plate for longer rotor life.
- Each section subjected to pressure testing to ensure all weld points pass the minimum strength requirements. The result is a safe and reliable tower - look for dimple on braces.

Load Limits

Designed to support equipment up to 3 square ft. (0.28 m²) projected wind area, mounted not more than 2 sections above house bracket.

Caution: Guy wires must be used for larger loads or greater heights above house bracket.

Sections

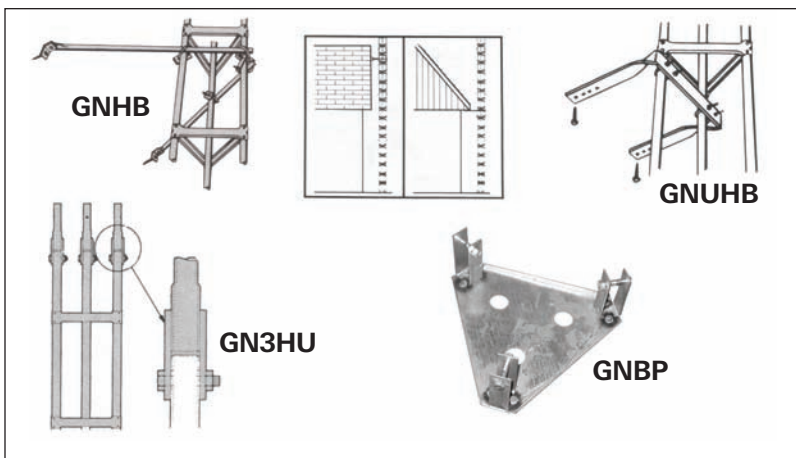
DMXB tower packages come complete with tower sections, DM mast, top plate, rotor plate, BP2S base plate, TMCA mast clamp assembly and DMXHB universal house bracket. Height includes mast.

GN18T	18 gauge top section	9.6" (2.90 m).
GN18S	18 gauge straight section	10'0" (3.05 m).
GN16T	16 gauge top section	9'6" (2.90 m).
GN16S	16 gauge straight section	10'0" (3.05 m).

Note: All sections complete with necessary nuts and bolts. Top sections include top bearing set screw and lower mast clamp assembly.

Accessories

GNHB	Universal house bracket 1" O.D. (2.54 cm) x 3' (0.91 m) arms.
GNUHB	Economical "U" house bracket.
GNBP	16 gauge base plate.
DMBS	Galvanized steel drive stakes. Set of three.
GN3HU	1 1/4" (3.2 cm) x 3' (0.91 m).
	3' hinge-up base.



WADE ANTENNA'S ONGOING POLICY OF CONTINUING DEVELOPMENT MAY RESULT IN SPECIFICATION CHANGES TO ITS PRODUCTS

CAUTION NOTICE

Please read carefully

Our published installation guidelines are for standard towers and mounting devices as specified. These guidelines are based on assumed soil and weather conditions that may, or may not exist in your area and on the assumption that no damage has occurred, or modifications are made to the tower or mounting device.

A qualified structural engineer should be consulted prior to installing any tower or supporting structure.



WARNING!

Survey your installation site **NOW** to prevent your antenna or support from coming in contact with overhead powerlines. Caution should be used when climbing towers and support structures.

FAILURE TO EXERCISE CAUTION MAY RESULT IN SERIOUS INJURY OR DEATH.