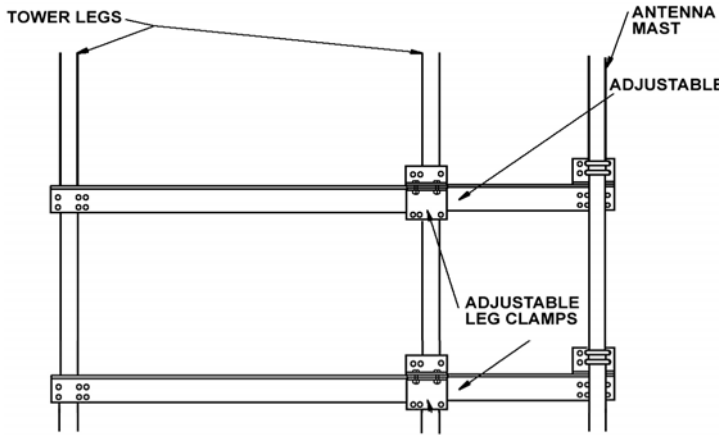


ANTENNA TOWER MOUNTS



UNIVERSAL TOWER MOUNT (UTM)

Description

- Designed to distribute load across tower face.
- Fits round leg towers.
- All material is hot dip galvanized.
- Fits most tower sizes.
- Specify tower face width and tower face diameter.

Labels in diagram: TOWER LEGS, ANTENNA MAST, ADJUSTABLE, ADJUSTABLE LEG CLAMPS, FRONT VIEW

ROTOR MOUNTING KIT (RMK)



Description

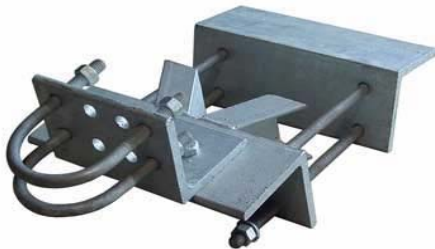
- Used to mount our J-283X Test/Search Antenna and Rotor.
- Fits round leg towers.
- All material is hot dip galvanized.
- Accommodates any size tower leg.

SIDE TOWER MOUNT (STM)



Description

- Intended to mount antenna away from tower legs.
- Fits round and bent angle leg towers.
- All material is hot dip galvanized.
- Fits most tower sizes.
- Specify tower face width and tower face diameter.



BENT ANGLE LEG CLAMP

Description

- Designed to mount our antennas and mounts to bent angle leg towers.
- All material is hot dip galvanized.
- Accommodates any size tower leg.